



# MP3

## VOICE RECORDING WATCH



Watch



MP3 Player



Voice Recorder



USB Connection  
Plug and Play

## INSTRUCTION MANUAL

---

[www.mondaine.com](http://www.mondaine.com)

## TABLE OF CONTENT

### 1. GENERAL DESCRIPTIONS

Basic Functions .....	4/5
Accessories .....	6

### 2. OPERATION

Button function overview .....	7
LED light overview .....	8
Power on/off .....	9
Mode switch .....	10
Playing MP3 music .....	11
Equalizer modes .....	12
Playing voice recording .....	13
Shortcut keys to recording function .....	13
Volume & music/recording control .....	14
Deleting music/voice recording .....	15
Time setting .....	15
Battery power indicator .....	16
PC connection .....	16
Battery recharging .....	17

### 3. INSTALLATION OF MP3 PLAYER

System requirements .....	18
USB connection .....	18
Installation guide .....	19
USB disk Partition and Encrypt .....	23
Firmware upgrade .....	25

### 4. CAUTIONS .....

26

### 5. HELPFUL TIPS .....

27

### 6. PRODUCT SPECIFICATIONS .....

28

### 7. NOTE .....

29

### 8. WORLDWIDE SERVICE .....

30

## 1. GENERAL DESCRIPTIONS

### Basic Functions

- Playable music format: MP3/WMA/ADPCM
- Portable storage disk USB2.0 (Full speed)
- Playing order: Sequence, Repeat Random, Pause Resuming
- Choose between different equalizer modes
- Delete (current track/voice recording)
- Built in Microphone: ADPCM voice recording
- Stereo earphone jack: standard Ø2.5mm
- Automatic detecting of battery voltage and power indicator
- Automatic power off if no button pushed in 2 minutes under pause status, Automatic power off in 2 minutes when all tracks played
- Rechargeable Li-ion battery (3.7V)
- Standard USB port for recharging, download and upload

### 5 buttons

**ON/OFF/▶▶/||**

power on/power off/play/pause

**▶▶/VOLUME+**

forward/increase volume

**◀◀/VOLUME-**

reverse/decrease volume

**DEL/RANDOM**

delete/random

**MODE/RECORD**

working mode/record

### 8 LED lights

**MP3** (MP3): lights up/MP3 mode: flashing per second/playing MP3: flashing per 0.5 second/playing MP3 in repeat random

**RECORD** (voice recording/playing): lights up/playing mode of voice recording: flashing per second/playing voice recording: flashing per 0.5 second/recording

**POWER** (power supply indicator): lights up/power on: off/power off or no power (also as battery power indicator): lights up/full power: flashing per second/1/10 power remained; off/out of power and automatic power off (also as USB indicator): lights up/in proper connection with PC

**CHARGE** (recharging): lights up/recharging; off/recharging over

**POP**: lights up/equalizer set as POP mode

**ROCK**: lights up/equalizer set as ROCK mode

**JAZZ**: lights up/equalizer set as JAZZ mode

**CLASSIC**: lights up/equalizer set as CLASSIC mode

## ACCESSORIES



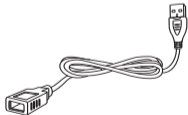
MP3 Watch



Earphone



Instruction/Installation CD



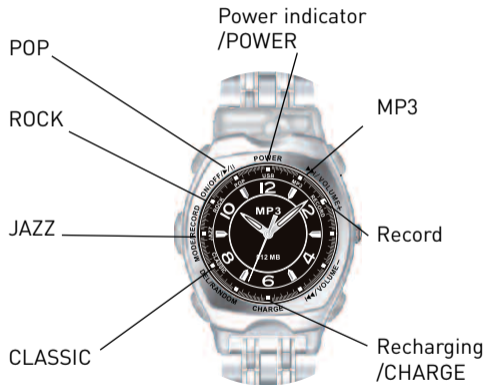
USB extension cable

## 2. OPERATION

### Button function overview



## LED light overview



## Power on/off

Press button **ON/OFF/▶/||** momentarily  
POWER light lights up, power on, then wait  
for 10 seconds, the MP3 player will be ready  
to play.

Press and hold button **ON/OFF/▶/||** for a  
while  
POWER light off, power off



**Note:** default mode when power on

- MP3 playing mode, MP3 light lights up
- Equalizer mode, same as when power off last time
- Play the last track of voice recording one motivated

## Mode switch

When MP3 playback or voice recording mode are paused or voice recording is stopped momentarily, mode switch as below

**Playing recording mode:** Press **MODE/RECORD** momentarily



**Playing MP3 mode:** Press **MODE/RECORD** momentarily

**MP3 sequence mode:** Press **DEL/RANDOM** momentarily



**MP3 random mode:** Press **DEL/RANDOM** momentarily

## Playing MP3 music (under MP3 mode)

Press **ON/OFF/▶/||** momentarily Play MP3 light flashing

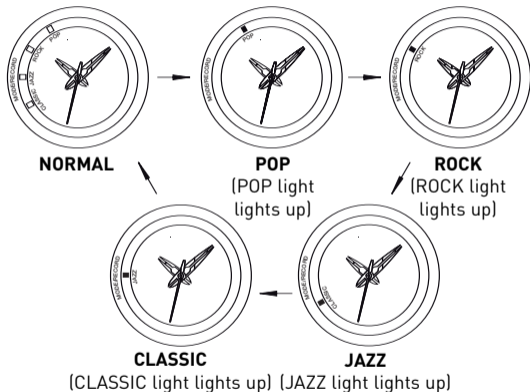
Press again **ON/OFF/▶/||** momentarily Pause MP3 light lights up



## Equalizer modes (under music playing mode)

Press button **MODE/RECORD** momentarily

Switch among the following equalizer modes:



**Note:** under **NORMAL** mode POP/ROCK/CLASSIC/JAZZ lights are off!

## Playing voice recording

(under recording playing mode)

Press **ON/OFF/▶▶/||** momentarily → play, **RECORD** light flashing

Press again **ON/OFF/▶▶/||** momentarily → pause, **RECORD** light lights up

## Shortcut keys to recording function

(under playing pause mode or recording pause mode)

Press **MODE/RECORD** and hold for a while → recording starts record light flashing per 0.5 second

Press **MODE/RECORD** → recording stops, record light lights up



## Volume & music/voice recording control

(under music playing or voice recording mode)

Press and hold **▶▶/VOLUME+** → increase volume

Press **▶▶/VOLUME+** momentarily → play next track  
(music/recording)

Press and hold **◀◀/VOLUME-** → decrease volume

Press **◀◀/VOLUME-** momentarily (1) play previous track (music/recording) if pressing within 5 seconds after playing (2) replay the current track (music/recording) if pressing after playing for 5 seconds



## Deleting music/voice recording

Press and hold button **DEL/RANDOM** for 2 seconds → delete the current track (music/voice recording)

**Note:** Please connect with PC to delete the songs or recordings which are less than 2 seconds



## Time settings

1. Pull out the crown to stop the second hand when it sweeps to 12 o'clock
2. Turn the crown to set hour and minute hands
3. Push back the crown and the second hand starts sweeping

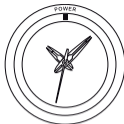


## Battery power indicator

Power indicator (POWER light): light up/full power

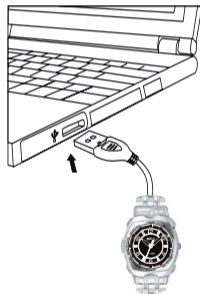
Flashing once per second indicates 10% power remains

Off/out of power and automatically power off



## PC connection

1. Turn on the MP3 player
2. Connect the MP3 player by the USB jack to PC through USB cable. POWER light lights up when connected
3. Flashing POWER light means data has been transferred (BUSY); lighted POWER light means standby status (idle); dead POWER light means disconnected from PC (suspend)
4. Remove the MP3 player from the PC as per PC's requirement when upload and download is completed



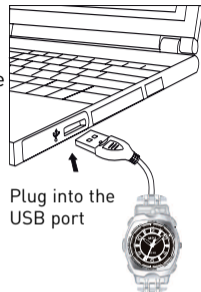
## Battery recharging

Recharging is needed when power indicator (POWER light) is flashing once per second or when the light is off

Connect the MP3 player to PC through USB cable

1. Recharging light (CHARGE) lights up-under recharge
2. Recharging light (CHARGE) lights weak-slow recharge
3. Recharging light (CHARGE) off-recharge finished

**Note:** The charging rate will be reduced to a trickle charge when the battery is near full power.



### 3. INSTALLATION OF DRIVER

#### System requirements

IBM compatible personal computer

Pentium 166 MHz MMX or faster

Windows 98SE/ME/2000/XP

USB port (Universal Serial Bus)

Mac Os X/Mac Os 10.3 above

64MB RAM or more

20MB free hard-disk space ore more

4XCD-ROM drive or more

Accessible to Internet (Recommended)

**Note:** User name has to be set as administrator under Windows 2000

#### USB Connection

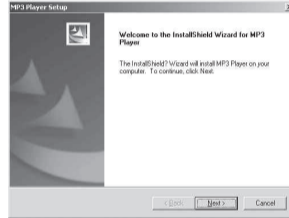
1. USB port on your PC is used for sending files
2. Check the USB port on your PC referring to its hardware instruction manual
3. Power light and CHARGE light are lighted when the MP3 is connected to PC through USB port
4. Under Win98 SE make sure the driver for the MP3 Player enclosed in the box is successfully installed before connecting the product to PC

### Installation guide

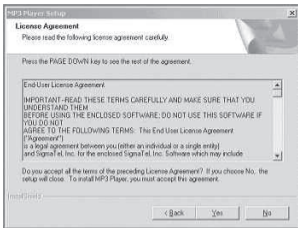
#### Install the USB driver

Put the installation CD into CD-ROM drive and then it will be installed automatically

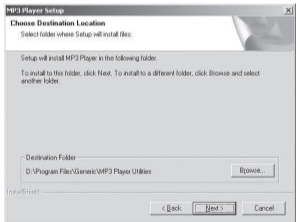
The following window will pop up:



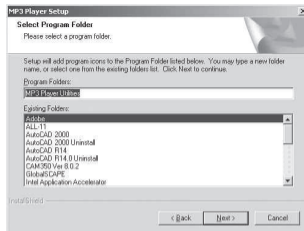
→Click **Continue** and the next window will pop up



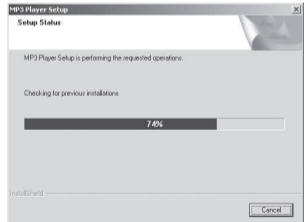
→ Click **Next** to continue



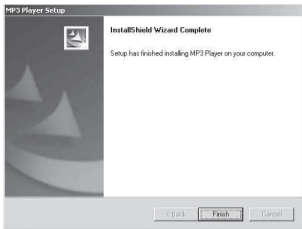
→ Select the installation folder and then click **Next**



→ Click **Next** to start installation



→ Installation completed and the next window will pop up



→Click **Finish** and restart your PC according to the PC requirement



## USB Disk Partition and Encrypt

1. Turn on the MP3 player
2. Connect the MP3 player to PC (please refer to **PC Connection**)
3. Click “Start” → “Driver” → “MP3 player Utilities 1.47” → “MP3 Player Disk Tool” will pop up

#### 4. Select **Partition and Encrypt**

5. Set suitable encrypted disk capacity.
6. Set new username and new password and then click **Start** Partition completed.
7. Click **OK** and restart you PC according to PC requirement
8. There will be two removable disks at this moment.  
The encrypted disk will show the following documents:
9. Click **RdiskDecrypt.exe** and type in the correct user name and password to open the disk

Correct user name and password are needed to open the encrypted disk, whenever connect the MP3 player to the PC

#### **Firmware upgrade**

1. Turn on the MP3 player
2. Connect the MP3 player to PC  
(please refer to **PC Connection**)
3. Click “Start” → “Driver” → “MP3 Player Utilities 1.47” → “MP3 Player Update Tool”
4. Click “Select new firmware file” then “Select new firmware”. Please download from manufacturer’s web site!
5. Click “Start” to begin upgrading

## 4. CAUTIONS

1. Do not disassemble or change any part of the product that is not mentioned in this manual
2. Do not pull or plug the product with wet hands, which may cause short circuit of the product
3. Do not expose the product to fire or excessive heat
4. Do not expose the product to electromagnetic wave circumstances, which may cause malfunction or data transmitting error of the product
5. Ensure the USB plug is dry before connecting to computer to avoid damage by moisture
6. Recharge the battery after power drained to prolong the battery life



wrong



right

## 5. HELPFUL TIPS

Problem	Analysis	Solution
Unable to play MP3	Battery low	Recharge the battery
	Non standard MP3/WMA files	Delete this music, download-standard MP3/WMA files
Unable to download music	USB cable broken or not connected properly	Check the USB connection and reinsert
Unable to do voice recording	No space for more recording files	Delete some old recording files
No Drive Letter	The USB plug not connected or loose	Check USB connection
	The Manager Software did not install successfully	Reinstall the Manager Software
	The PC motherboard does not support USB port	Upgrade the motherboard driver
	MP3 player does not turn on	Turn on the MP3 player
Lights of REC and MP3 flashes at the same time	This would happen when there are no songs or recording inside	Not a fault
Sound skips or resets	MP3 file made at compression level exceeding 320kbps.	Using lower compressing level to record the file into MP3 format
	Wrong music format/damaged music file	Delete this music and download correct music file
Button unworkable	Product fails to work properly	Press buttons <b>ON/OFF/▶▶/  </b> and <b>▶▶/VOLUME+</b> together to reset

## 6. PRODUCT SPECIFICATIONS

**Built in memory:** 512MB

**Port:** standard USB port

**Battery:** 170mAh/3.7V macromolecule polymer Li-ion rechargeable battery

**Recharging time:** 2hours for fully charged

**Battery playtime:** 8 continuous hours with fully charged battery

**Voice recording time:** 36 hours/512MB

**Music playtime:** WMA format (64Kbps) = 16 hours/512MB

MP3 format (128Kbps) = 8 hours/512MB

**S/N Ratio:** 80dB

**Working temperature:** -5°C ~ +50°C

**Earphone output:** 5mW + 5mW

**Frequency response:** 20Hz ~ 20KHz

**Sampling frequency of voice recording:** 8KHz

**Compression level:** 32Kbps ~320Kbps

## 7. NOTE

The manufacturer is not responsible for any radio or TV interference caused by unauthorized modifications to this equipment. Such modifications could void the User's authority to operate the equipment

If the MP3 watch shuts down and the buttons are not workable please press **ON/OFF/▶/||** and **▶/VOLUME+** at the same time to reset

## **8. WORLDWIDE SERVICE**

MONDAINE SERVICE

Postfach

4562 Biberist

Switzerland

If you have any questions or need help please refer to:  
**info@mondaine.ch**